

FACILITATING CRITICAL CONVERSATIONS FOR COMMUNITY HEALTH

Dr. Erin Yelland



K-STATE
Research and Extension



Critical Conversations for Healthy Communities



K-STATE
Research and Extension

Start With Why...

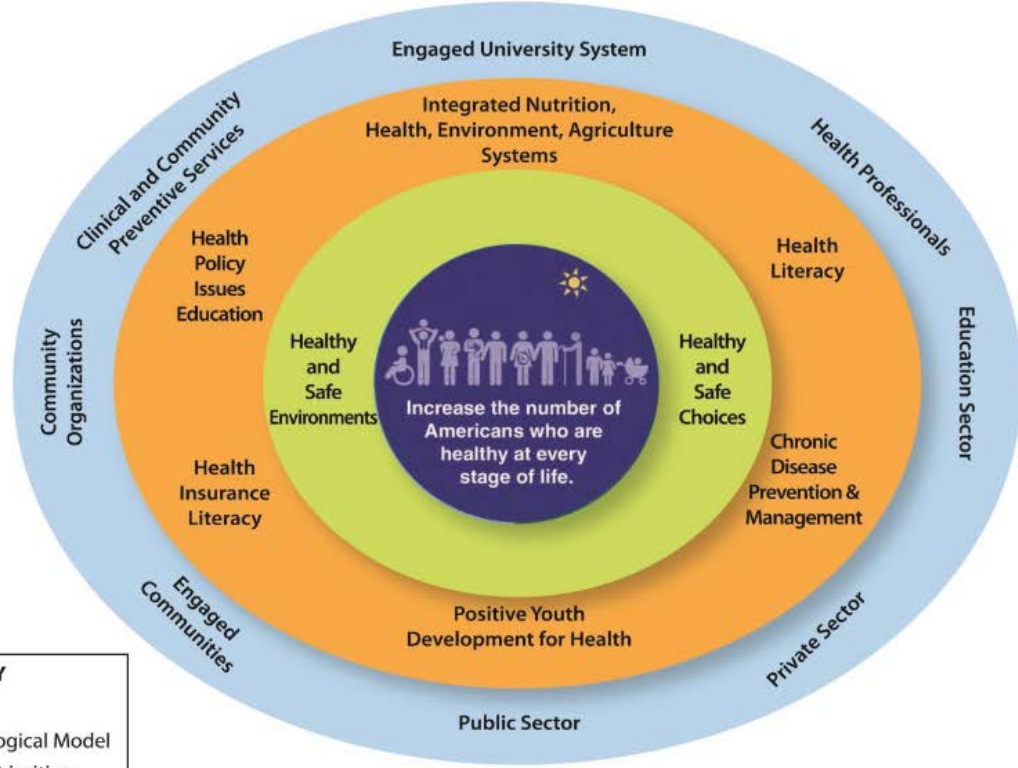
- KSRE's Grand Challenge for Health
- Health outcomes are declining



We live in a time when we can no longer expect that American children will live a longer life than their parents.

- 25% of health outcomes are a direct result of genes & health behavior...
- 75% are related to “social and environmental determinants”

Cooperative Extension's National Framework for Health & Wellness



KEY

- Outcome
- Social-Ecological Model
- Extension Priorities
- Partners

National Health Framework

(The Cooperative Extension) model arose at a time when American agriculture was largely inefficient and only marginally productive. The consequences of the agricultural practices of the time were endangering our Nation's economic, environmental, and personal health. A century later, American agriculture is without equal in its contributing food to a growing world population.

We, and others, believe that this same system of Extension can do for the nation's health what it did for American agriculture.

Cooperative Extension's National Framework for Health and Wellness, 2014

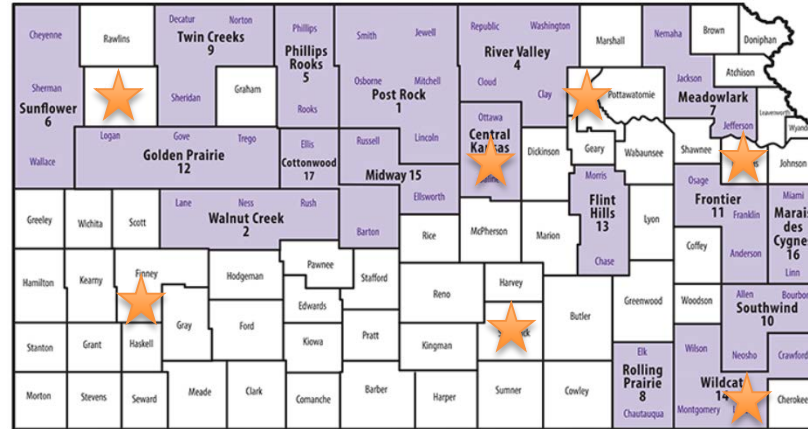
Start With Why...

Bring KSRE agents and key stakeholders together to discuss their community's:

- health challenges
- existing resources
- needs
- collaborative partnerships

Logistics

- Identified 7 locations across the state to host



- Recruited Extension agents & community partners 4 months prior
 - Email and e-newsletter
 - Provided community partner recruitment script

Who Attended

- 275 participants across 7 locations
 - Extension agents and administrators
 - Community partners
 - Public health
 - Board chairs & members
 - County commissioners
 - Foundation representatives
 - Etc.



Day-Of Setup

- Zoom connection to all sites
- Grouped participants by geographical location (up to 10 per group)
- Participants were provided with:
 - Agenda
 - A folder of their county's health data
 - Easel pad paper & markers
 - Lunch!

Day-Of Agenda



**CRITICAL
CONVERSATIONS
FOR HEALTHY
COMMUNITIES**

K-STATE
Research and Extension

THE AGENDA

9:30 - 10:00
Gather and enjoy coffee

10:00 - 11:00
Welcome, introductions, and setting the stage

11:00 - 12:00
Breakout session 1

12:00 - 12:45
Lunch

12:45 - 1:00
Making strides toward a healthier Kansas

1:00 - 2:20
Breakout session 2

2:20 - 3:00
So, now what?

Goals:

- Welcoming & comfortable
- Conversational
 - No more than 15 minutes at a time of talking “at” them
- Productive

Facilitation Method

Modified World Café



Guiding Questions

Question 1

What are the biggest health concerns in our community today? How do we know this?

Question 2

What resources does our community currently have to address these needs?



Guiding Questions

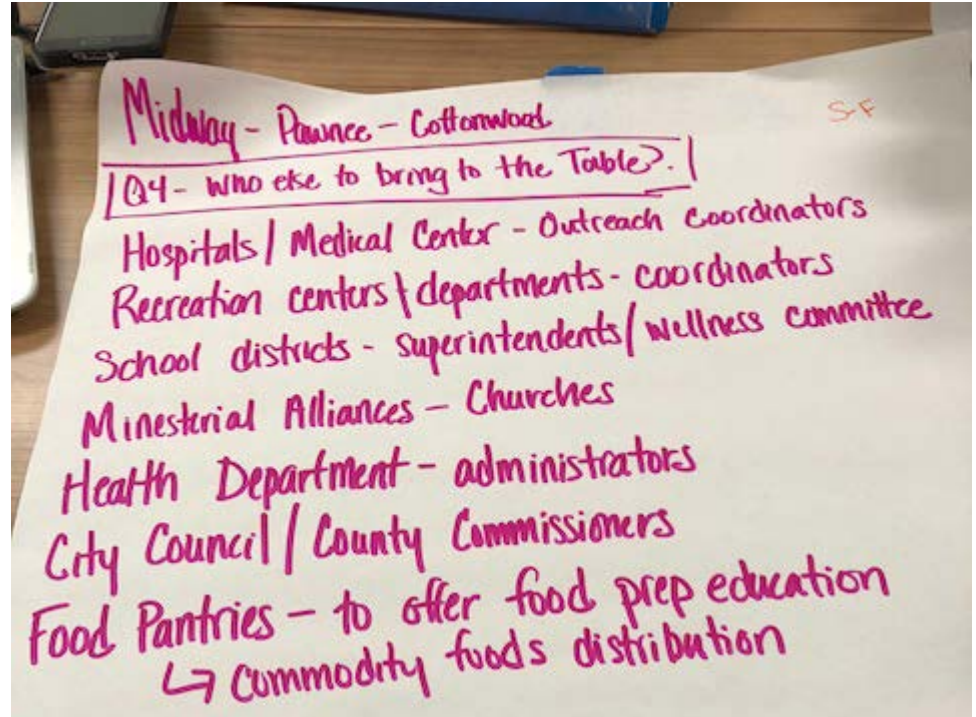
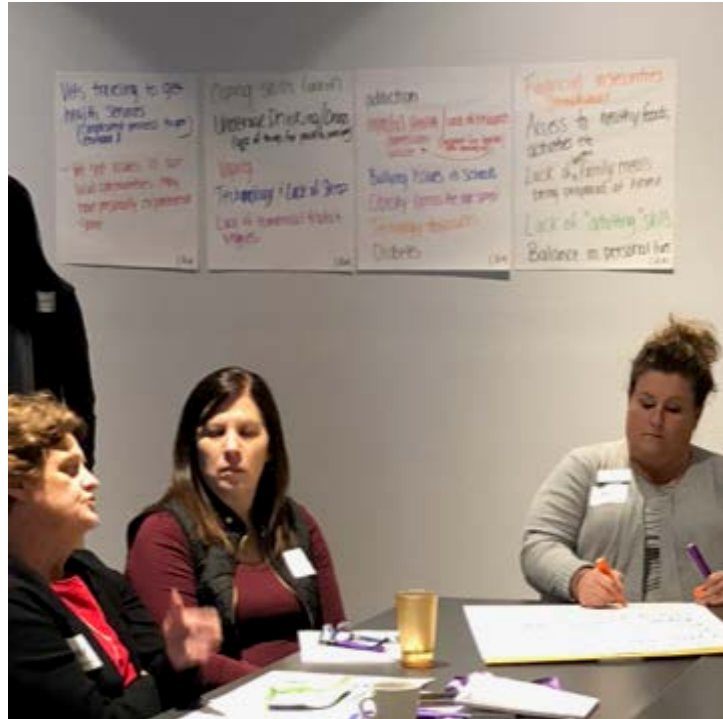
Question 3

What resources, programs, and policy, systems, and environmental change (PSE) initiatives do we need to help address the biggest health concerns in our community?

Question 4

Who else do we need to bring to the table to discuss the resources, programs, and PSE initiatives we need to address the biggest health concerns in our community? Who needs to be on board to implement these strategies?





So Now What?

- 30-day team goal
 - Hosting local community health conversations
 - Identifying and supporting community-based health initiatives
 - Making introductions to new partners and seeking new collaborations
 - Pursuing leadership in community health assessments

Evaluation

Phases of Collective Impact

We are ready to...

- Generate ideas and dialogue
- Initiate action
- Organize for impact



Next Steps

- Conversation toolkit
- Identify gaps and where Extension can play a role
- Ask local units to create a community plan

What Can You Do?

- Replicate this model for use in your state on a variety of topics
- Learn from us:
 - Conversations are crucial
 - Get all hands on deck
 - Help them construct their vision
 - Change takes time